

NOTES

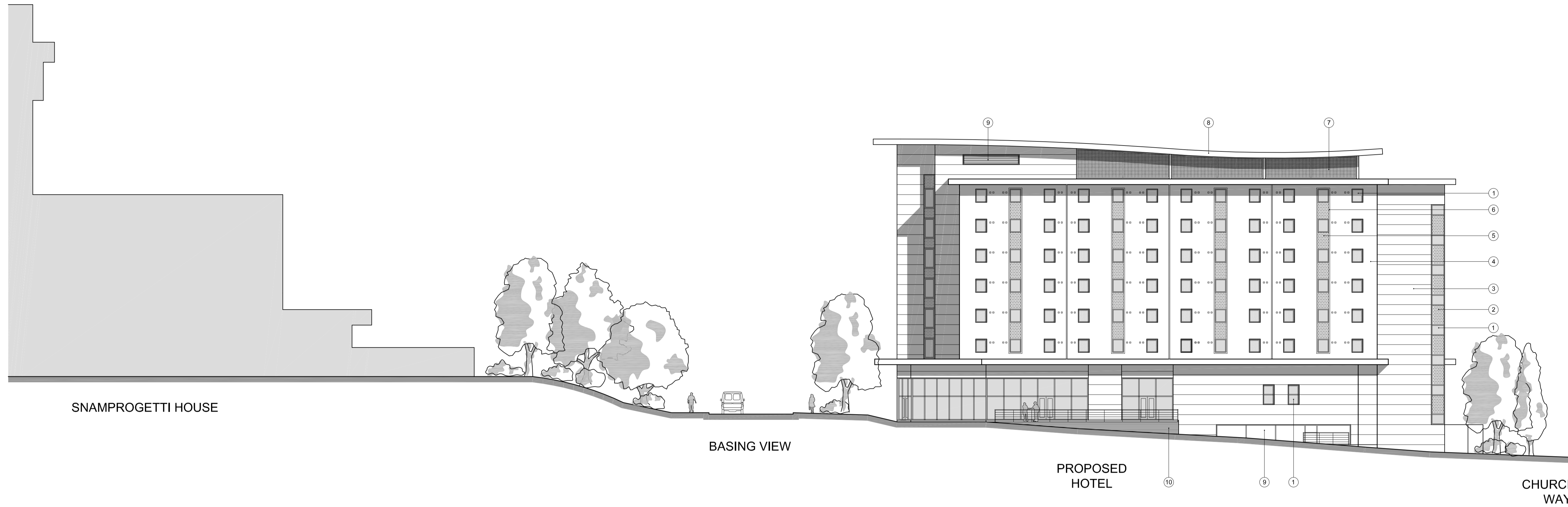
1 COPYRIGHT: The contents of this drawing may not be reproduced in whole or in part without the written permission of PDP Group Limited

REVISION

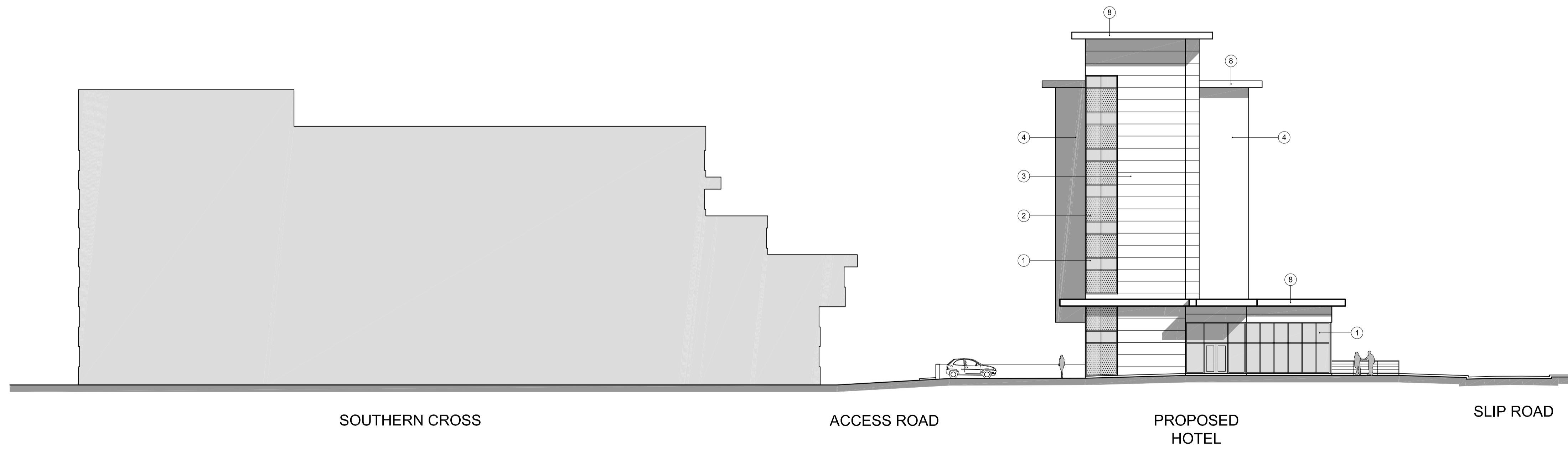
REV	DESCRIPTION	DATE	BY	CHKD
A	Glazed spandrel panels added	29-06-09	ES	MM
B	West Elevation amended to include terrace retaining wall, balustrading etc.	10-07-09	SB	MM
C	Glazed spandrel panels on North Elevation stair tower extended	16-07-09	SB	MM

LEGEND:

- 1 - GLAZING / COLOUR COATED FRAMES
- 2 - GLAZED SPANDREL PANEL
- 3 - METAL CLADDING SYSTEM
- 4 - RENDER
- 5 - GLAZED SPANDREL PANEL
- 6 - COLOUR COATED METAL SURROUND
- 7 - GALVANISED MESH SCREEN
- 8 - COLOUR COATED METAL FASCIA
- 9 - COLOUR COATED METAL LOUVRES
- 10 - BLUE ENGINEERING BRICKWORK



WEST ELEVATION



NORTH ELEVATION

PDP ARCHITECTS

RYEBROOK STUDIOS WOODCOTE SIDE EPSOM SURREY KT18 7HD 01372 744446 www.pdp.co.uk



PROJECT

THE GLASSHOUSE - BASINGSTOKE

DRAWING

NORTH AND WEST ELEVATIONS

DRAWN	ES	DRG No	REVISION
CKD	MM	4435 P 417	C
DATE	09-04-09		
SCALE	1:200@A1		

