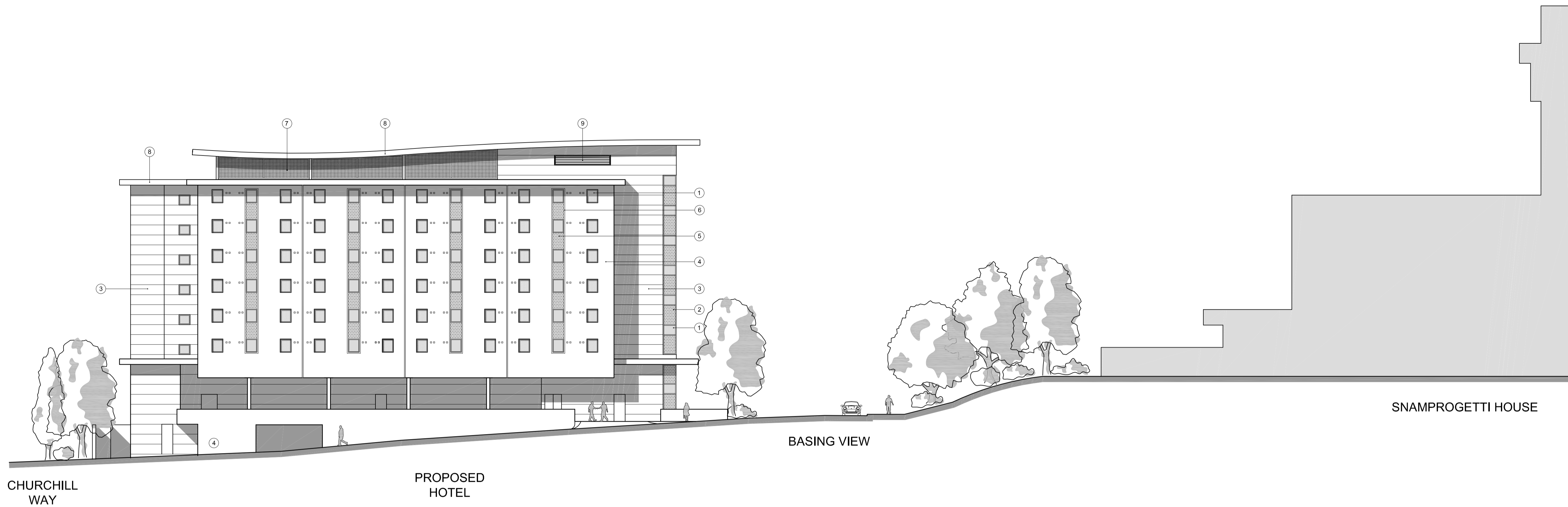


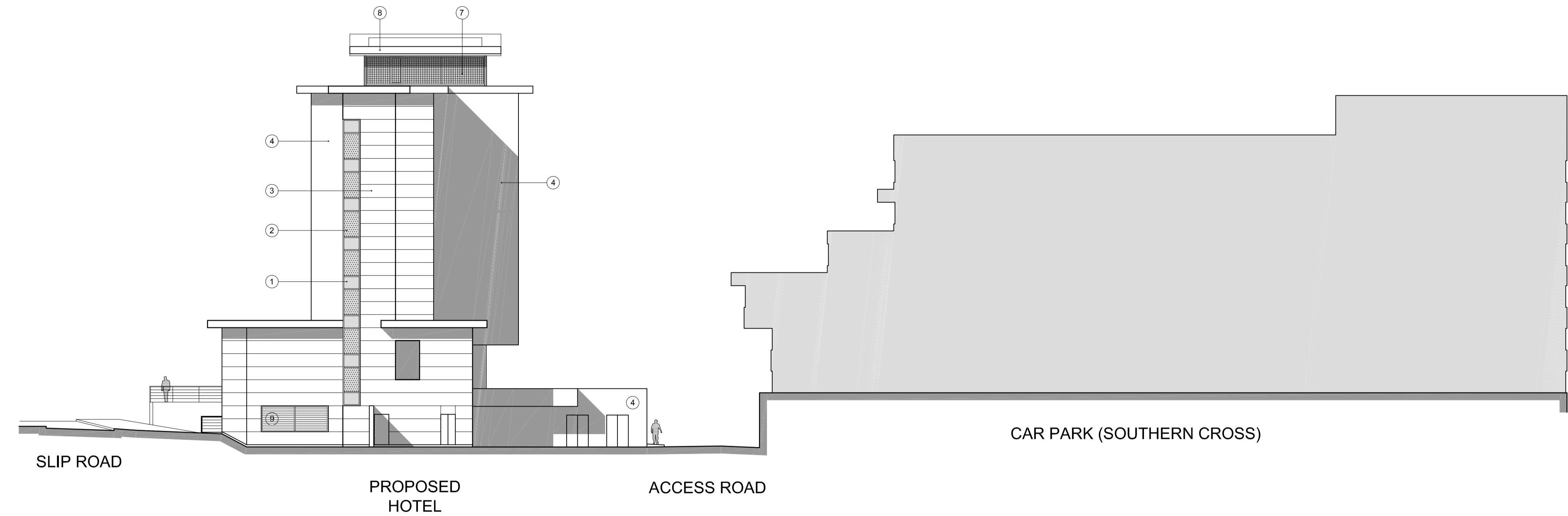
NOTES  
 1 COPYRIGHT The contents of this drawing may not be reproduced in whole or in part without the written permission of PDP Group Limited

REV	DESCRIPTION	DATE	BY	CKD
A	Glazed spandrel panels added Retaining wall added	29-06-09	ES	MM
B	Glazed spandrel panels on East Elevation stair tower extended	16-07-09	SB	MM

- LEGEND:
- 1 - GLAZING / COLOUR COATED FRAMES
  - 2 - GLAZED SPANDREL PANEL
  - 3 - METAL CLADDING SYSTEM
  - 4 - RENDER
  - 5 - GLAZED SPANDREL PANEL
  - 6 - COLOUR COATED METAL SURROUND
  - 7 - GALVANISED MESH SCREEN
  - 8 - COLOUR COATED METAL FASCIA
  - 9 - COLOUR COATED METAL LOUVRES



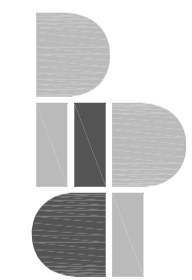
EAST ELEVATION



SOUTH ELEVATION

PDP ARCHITECTS

RYEBROOK STUDIOS WOODCOTE SIDE EPSOM  
 SURREY KT18 7HD 01372 744446 www.pdp.co.uk



PROJECT  
 THE GLASSHOUSE - BASINGSTOKE

DRAWING  
 SOUTH AND EAST ELEVATIONS

DRAWN ES DRG No 4435 P 418 REVISION B  
 CKD MM  
 DATE 09-04-09  
 SCALE 1:200@A1

